

## SNMPc OnLine 2009

*"The new SNMPc Online provides a clean, professional-looking and intuitive web interface that is easy to access, easy to customize and easy to understand. With SNMPc and SNMPc Online you have your total solution."*

Shaun Sturby, Technical Services Manager - Optrics Engineering



SNMPc OnLine is an advanced reporting engine for the SNMPc Enterprise Network Management System. With a dynamic web based console and flexible presentation options including Microsoft Visio Graphics, pre-canned reports, and custom dashboards, SNMPc Online gives you unprecedented network visibility.

### ► Support for Microsoft Visio Graphics

Create highly customized graphical map representations with the Microsoft Visio drawing application. Maps are updated automatically to show device and network status.

### ► Specialized Reporting

Get "out-of-the-box" results with optimized report formats for network availability and latency, router and switch performance, server CPU and disk metrics, and for selected vendor's devices.

### ► High Level Overviews

Display multiple reports in a single Top N dashboard view. Concise one screen interface delivers network overview and "to do list" for potential network issues.

### ► Custom Dashboards

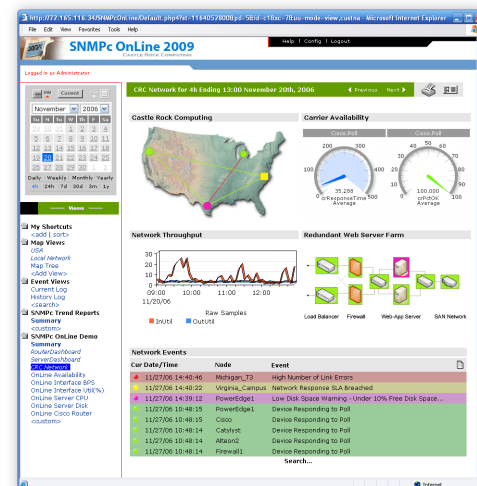
Mix and match information from multiple reports and devices on personalized web pages with versatile graphic elements including dials, 3d-graphs, tables, charts, event views and node lists.

### ► Scalable Architecture

Manage large global networks with geographic or organization based report grouping and SNMPc's distributed polling capabilities.

### ► Multi-User Security

Restrict capabilities and reports available to each user based on their needs and responsibilities. An ideal solution for Management Service Providers.



### ► Multi-Vendor Support

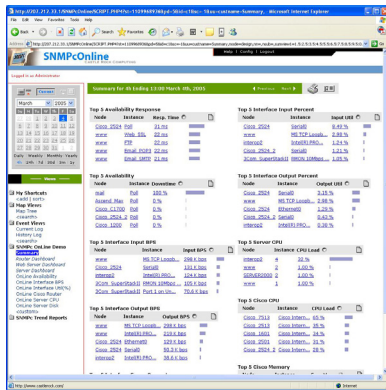
Monitor performance metrics and SNMP alerts from any SNMP v1, v2, or v3 enabled device, regardless of vendor. A future proof solution that adapts to your requirements as your network evolves.

### ► Seamless Integration

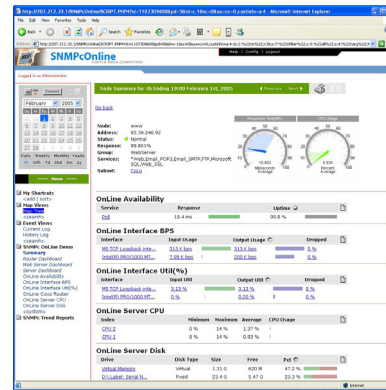
SNMPc Enterprise node information, event logs, and existing trend reports are immediately available and updated in real time.

# SNMPc OnLine 2009

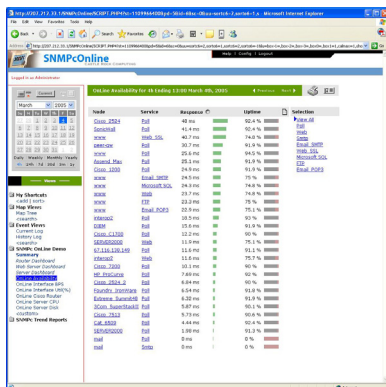
## Sample Report Styles



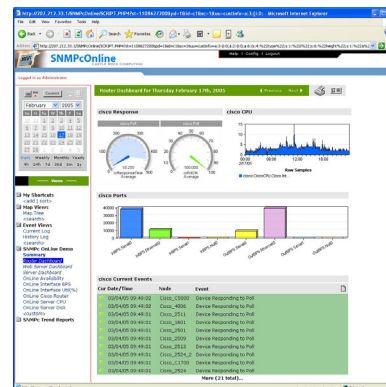
Top-N Report Summary



Detailed Device View



Network Availability



Custom Router Dashboard

### System Requirements

Management Platform

SNMPc Enterprise 7.1.5 or above

WebServer:

Apache (included) or Microsoft IIS

Database:

Microsoft SQL Server 2005 (Express Edition included)

Platform:

Windows Vista, XP, 2008, 2003, 2000

Graphics Application:

Microsoft Visio 2003 or 2007 (optional)

CPU:

PIII 1Ghz

Memory:

1GB RAM

Disk Space:

100Gb



12930 Saratoga Ave, Saratoga, CA 95070 USA

408.366.6540

fax: 408.252.2379

sales@castlerock.com

www.castlerock.com