

Config Backup

- Daily automatic backup of config files on devices in the SNMPc map.
- Version history
- Easy tracking of changes

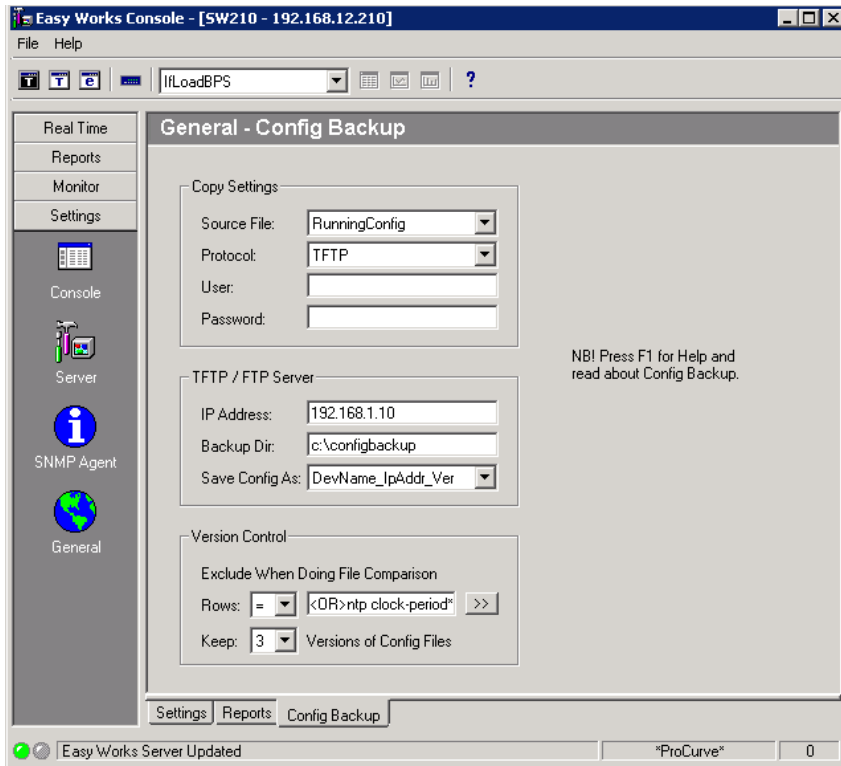
Device	IP Address	Last Changed	Last Backup	Last State	Platform	Last Saved As
c6500-dh	138.6.4.3	2011-03-30	2011-03-31	Successful	s72033_rp-IPSERVICE	c6500-dh_138.6.4.3_v3.cfg
Grånby-sw2	10.0.16.18	2011-03-30	2011-03-31	Successful	C2950-16Q4L2-M	Grånby-sw2_10.0.16.18_v2.cfg
cent_stordammen_sw	10.0.85.3	2011-03-30	2011-03-31	Successful	C2960-LANLITE-M	cent_stordammen_sw_10.0.85.3_v2.cfg
treklangen-sw16	138.6.242.5	2011-03-30	2011-03-31	Successful	C2960-LANLITEK9-M	treklangen-sw16_138.6.242.5_v3.cfg
c6500-vx	138.6.4.2	2011-03-30	2011-03-31	Successful	s72033_rp-IPSERVICE	c6500-vx_138.6.4.2_v3.cfg
illa-sl-n-sw01	10.0.85.9	2011-03-30	2011-03-31	Successful	C2950-16Q4L2-M	illa-sl-n-sw01_10.0.85.9_v1.cfg
Tunaskola_sw1	138.6.142.22	2011-03-29	2011-03-31	Successful	C2960-LANLITEK9-M	Tunaskola_sw1_138.6.142.22_v2.cfg
Björkvalleskolan-sw1	10.26.14.100	2011-03-29	2011-03-31	Successful	C2950-16Q4L2-M	Björkvalleskolan-sw1_10.26.14.100_v2.cfg
Tunaskola_sw2	138.6.142.23	2011-03-26	2011-03-31	Successful	C2960-LANLITEK9-M	Tunaskola_sw2_138.6.142.23_v2.cfg
Gottсандaskolan_bibl-sw	10.0.48.6	2011-03-26	2011-03-31	Successful	C2900-L-C3H2S-M	Gottсандaskolan_bibl-sw2_10.0.48.6_v2.cfg
Gottсандaskolan-sw1	10.0.48.3	2011-03-26	2011-03-31	Successful	C2950-16Q4L2-M	Gottсандaskolan-sw1_10.0.48.3_v2.cfg

14 devices (of 417) have been changed during the last 7 days.

```
Diff 2: Delete lines 315 - 317 (left file)
Diff 1: Change line 3 (left file) to line 3 (right file)
Diff 3: Delete lines 316 - 325 (left file)
Diff 4: Change line 2361 (left file) to line 2348 (right file)
```

```
303 vlan 315
304 name uks6_eriksbergssk_prod
305 |
306 vlan 316
307 name uks7_heidenstamssk_prod
308 |
309 vlan 317
310 name uks8_brantingssk_prod
311 |
312 vlan 318
313 name uks9_stenhagensk_prod
314 |
315 vlan 323
316 name uks14_kvargardessk_prod
317 |
318 vlan 328
319 name uks19_tunabergssk_prod
320 |
321 vlan 329
322 name uks20_savjask_prod
323 |
324 vlan 330
325 name uks21_vstenhagsk_prod
326 |
327 vlan 332
328 name uks23_celciussk_prod
329 |
330 vlan 333
331 name uks24_uveng_prod
332 |
333 vlan 338
334 name uks29_linnesk_prod
335 |
336 vlan 339
337 name uks30_stadsarkivet_prod
338 |
339
```

4 lines have been changed between version_2 and version_3



Configuration to do in Easy Works